

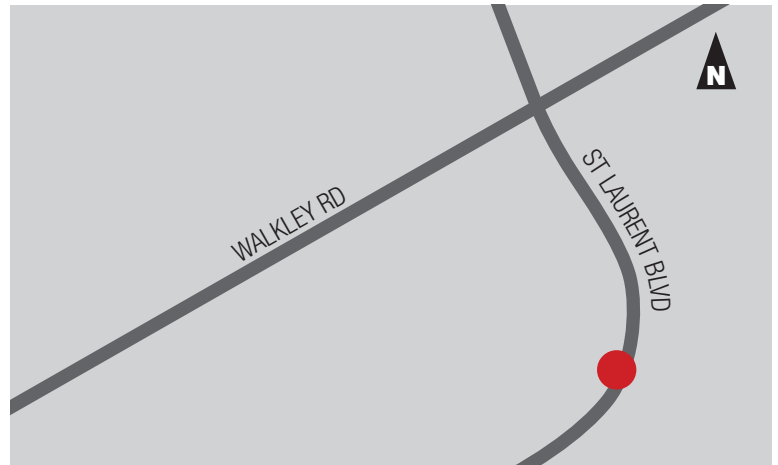


PROPERTY DESCRIPTION

Situated in a campus style setting, 2270 St. Laurent provides ample surface parking. The ground floor unit features an in-suite kitchenette and is accessed through a private entrance.

OFFICE - 2270 St. Laurent

- 1,810 SF
- Rental Rate: \$11 PSF
- Additional Rent: \$13.65 PSF (2023 estimate)
- Ample parking on site
- Available immediately

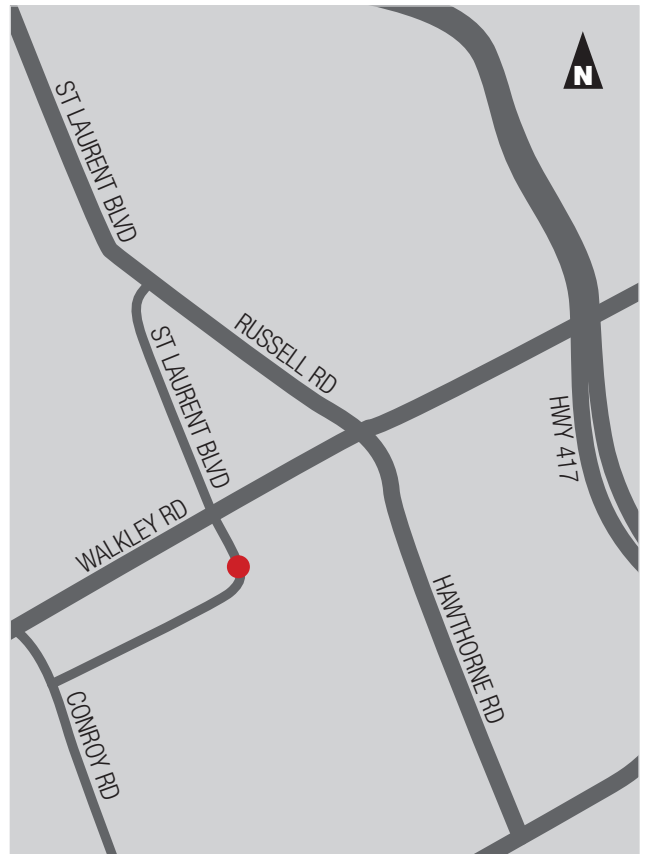
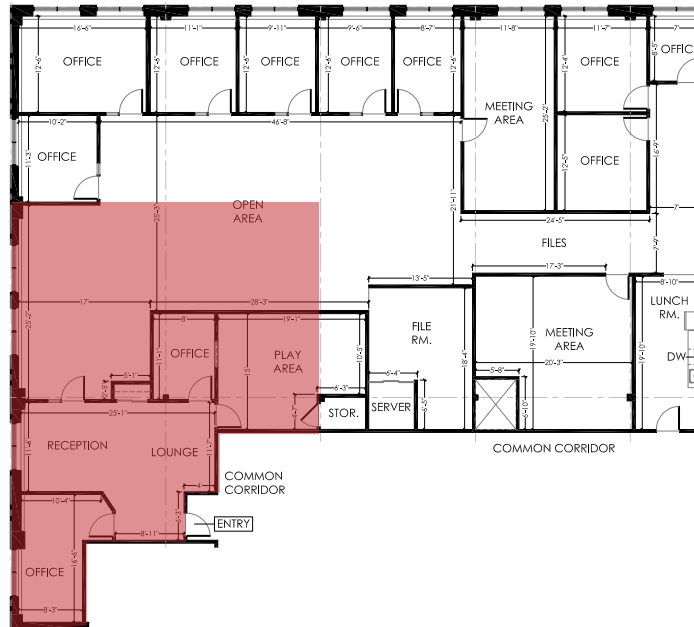


LOCATION

2270 St. Laurent Boulevard is located within the Ottawa Business Park on the west side of St. Laurent Boulevard, just south of Walkley Road. The Park is surrounded by a plethora of amenities and has easy access to Highway 417. It is directly on a major public transportation route.

RICHCRAFT

2270 ST. LAURENT UNIT 202 OFFICE



richcraft.com

613.739.5777 | leasing@richcraft.com