

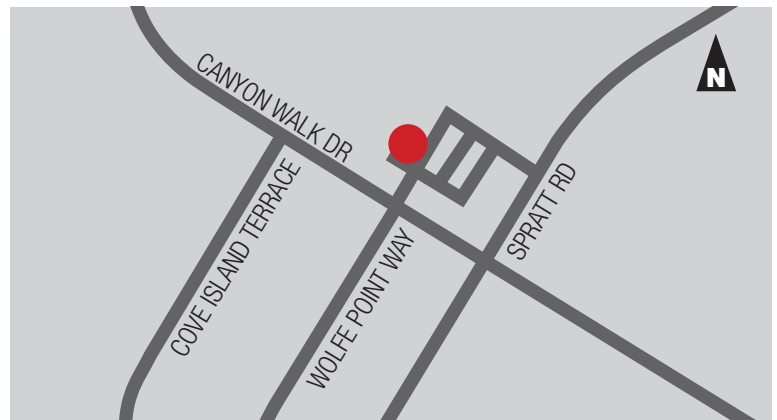


PROPERTY DESCRIPTION

This unit is improved with a reception area, meeting rooms, four offices, washroom, and a kitchenette. Please inquire within for more information.

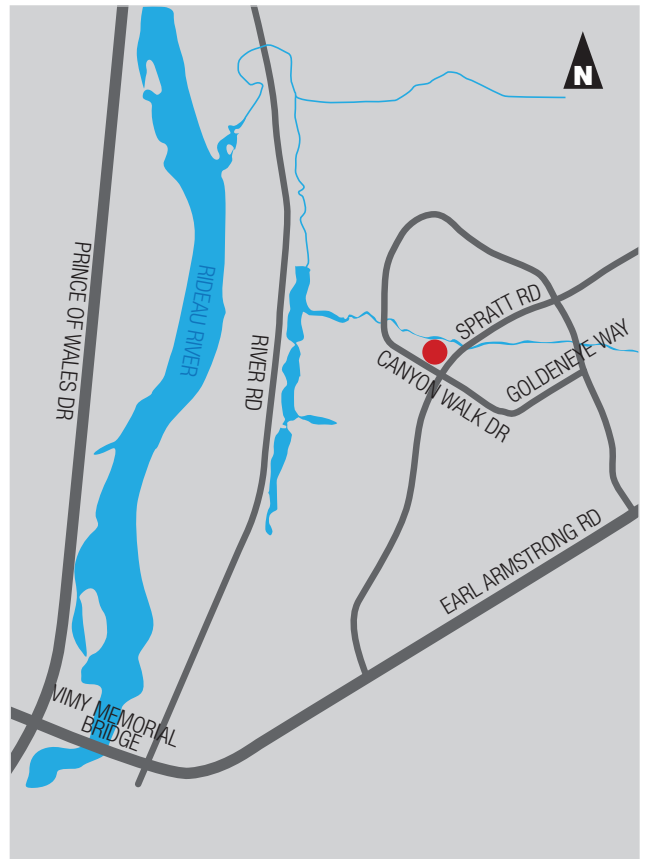
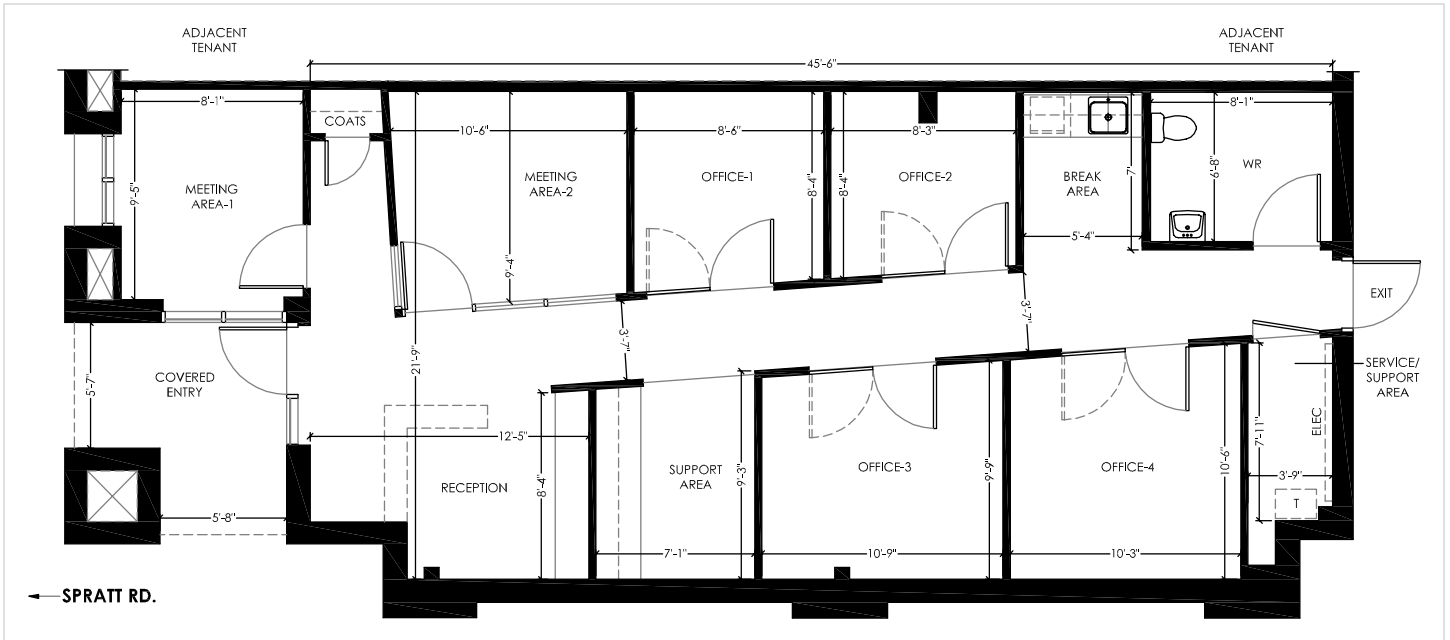
RETAIL Unit 4 - 1,296 SF

- 1,296 SF
- Rental Rate: \$22 PSF
- Operating Costs: \$15.89 PSF (2019)
- Space configuration perfect for office or medical use
- 16 foot ceiling height
- Storefront and Pylon Signage available
- Ample parking on site
- Available Immediately



LOCATION

Located in the growing community of Riverside South, Canyon Walk Plaza has excellent visibility to Spratt Road and Canyon Walk Drive. The neighbourhood center's tenants include Mac's convenient store, a pharmacy, Riverside South Animal Hospital, physiotherapy clinic and an orthodontistry practice.





CANYON WALK PLAZA 4188 SPRATT ROAD UNIT 4 RETAIL

