

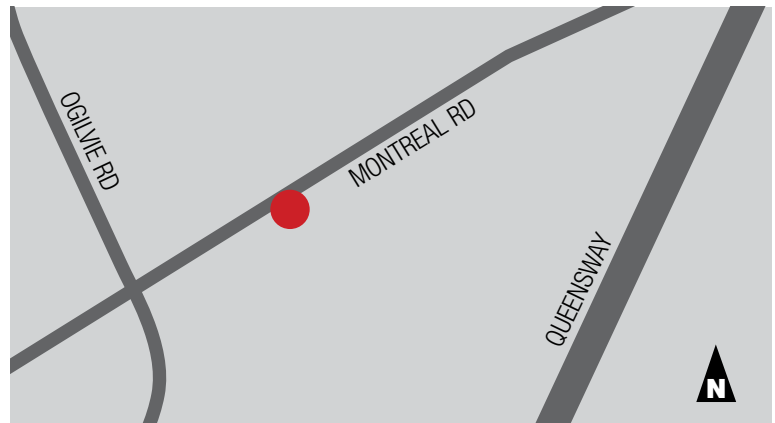


PROPERTY DESCRIPTION

Join us at Sinclair Plaza. With a ceiling height of 16 feet and highly visible signage opportunities, this site is ideal for a variety of retail service and medical uses.

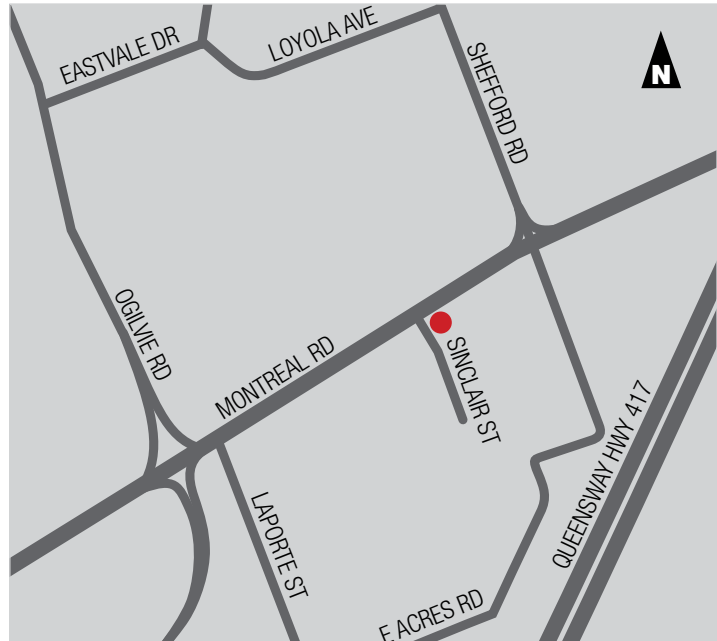
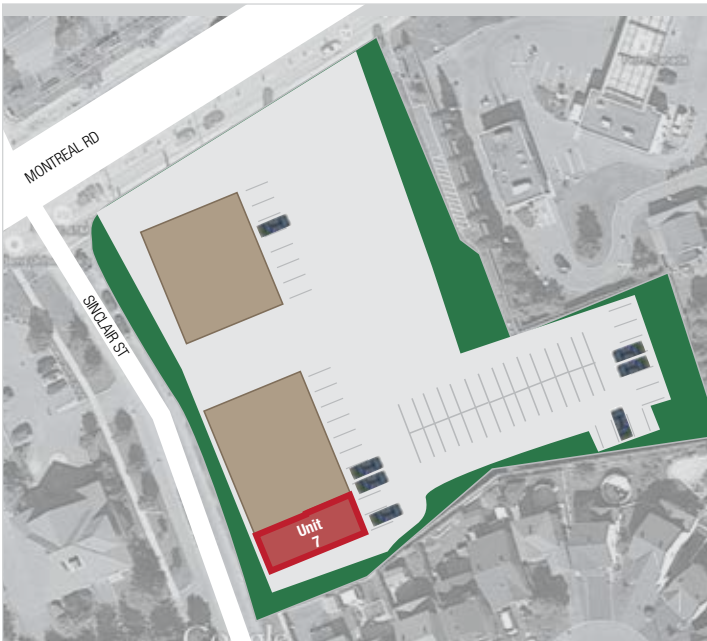
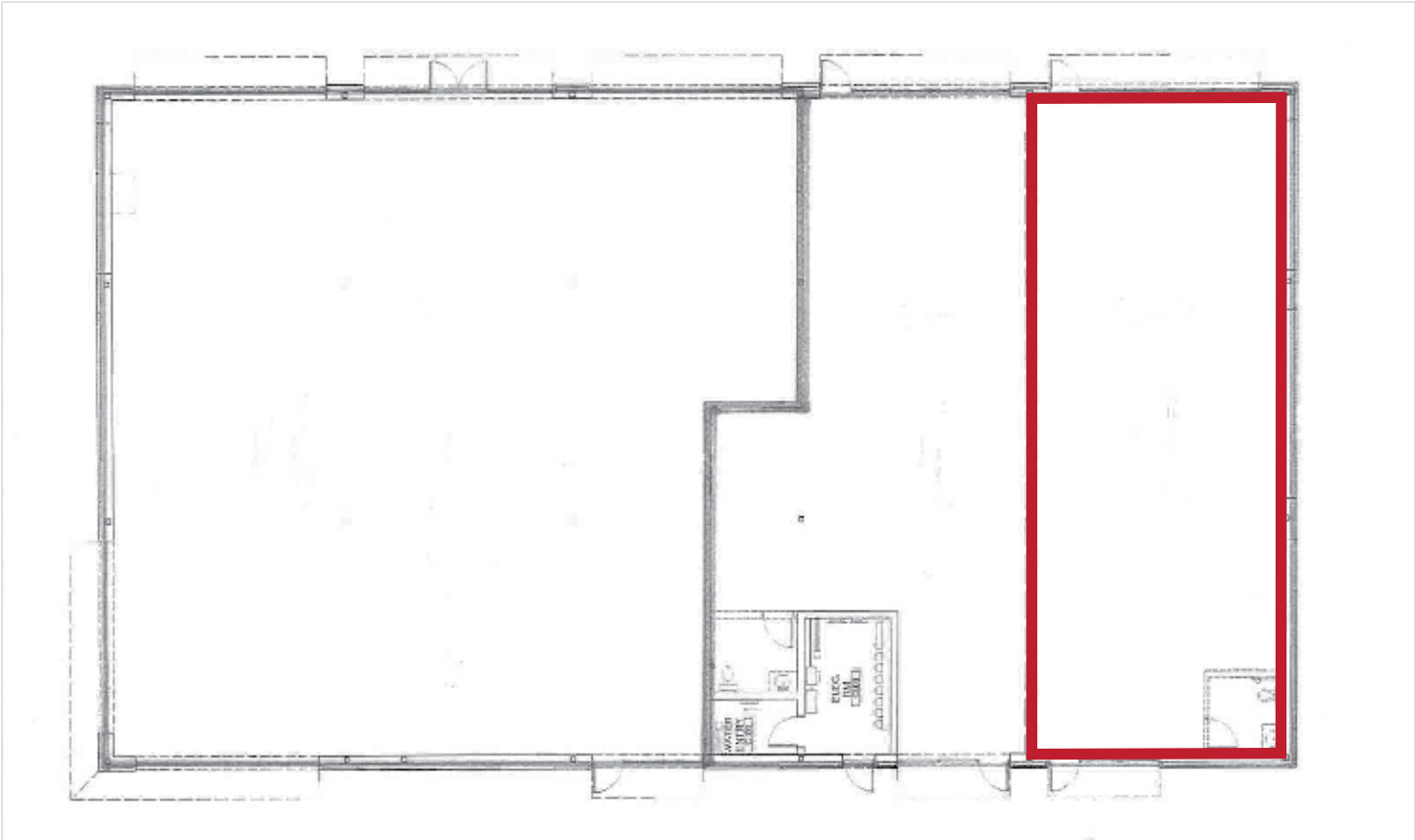
RETAIL Unit 7 - 1,939 SF

- Rental Rate: \$20 PSF
- Operating Costs: \$14.17 PSF (2020)
- Pylon and storefront signage available
- Available Immediately
- Ample Parking



LOCATION

Sinclair Plaza, built in 2010, is located in Ottawa's east end on the south side of Montreal Road between Ogilvie Road and Highway 174. This busy corridor, just blocks from Canotek Industrial Park, is easily accessed through public transportation. The site is surrounded by dense residential and retail uses.





SINCLAIR PLAZA

2164 MONTREAL ROAD UNIT 7

RETAIL

