

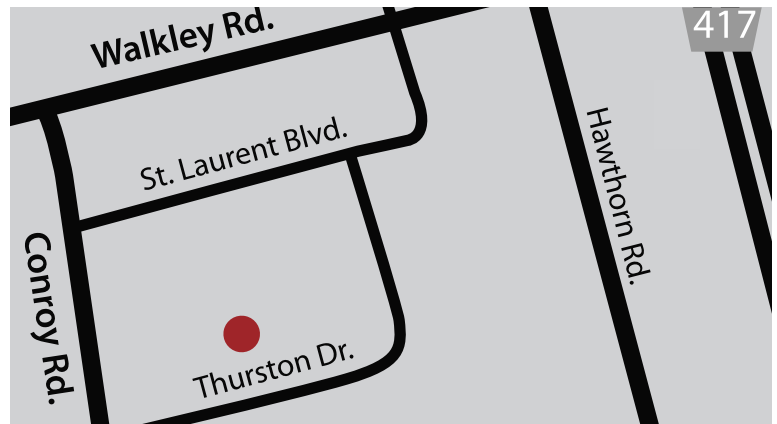


PROPERTY DESCRIPTION

Situated in a campus-style setting, this building, although traditionally used for office space, the units can also be used for flex or industrial spaces. This building has 24-hour security.

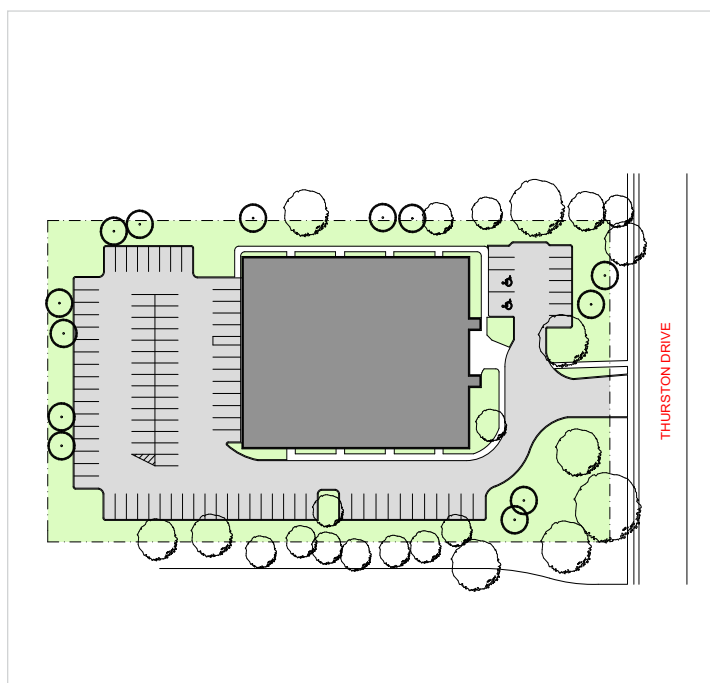
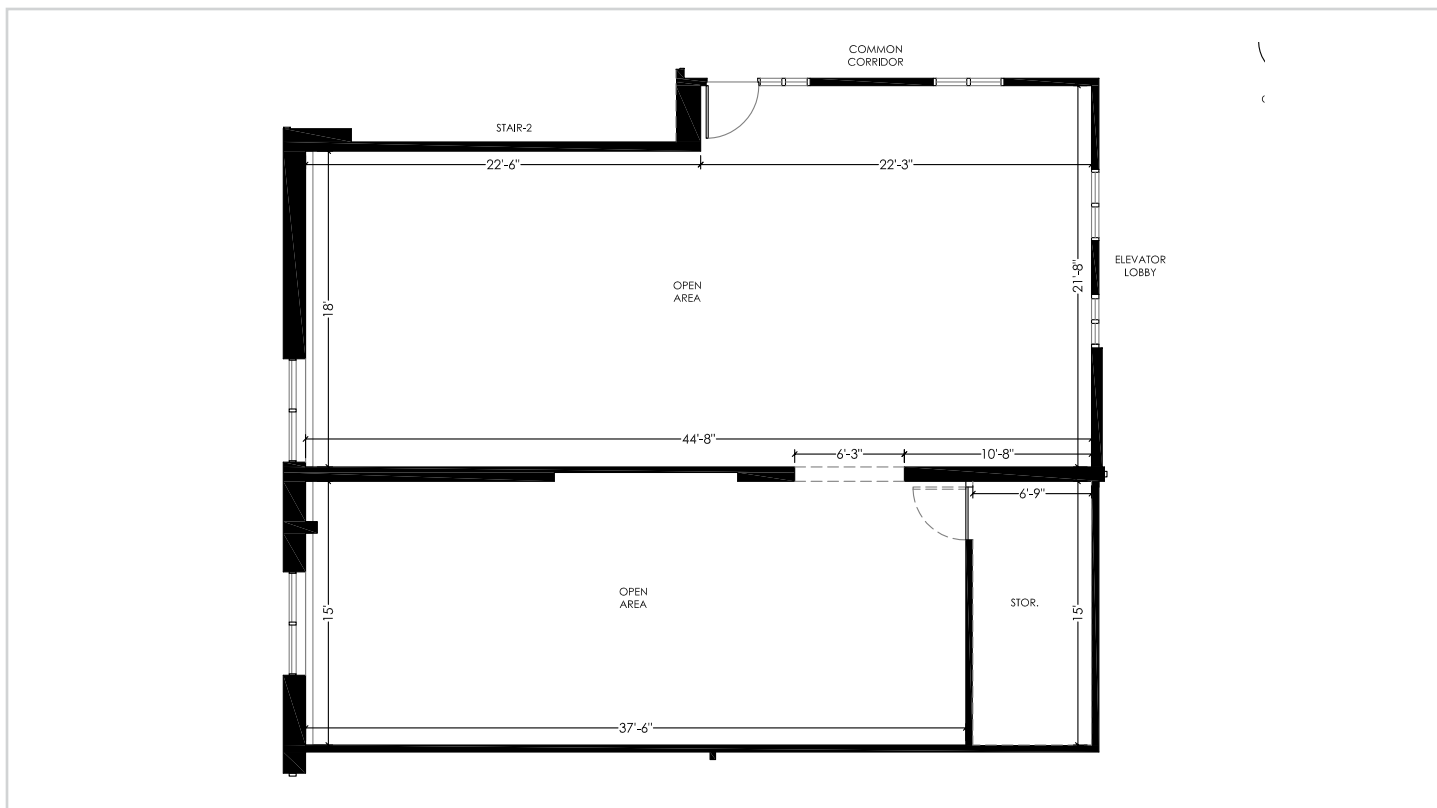
OFFICE Suite 105 - 1,900 SF Available

- Rental Rate: \$13.50 PSF
- Additional Rent: \$14.47 PSF (2024 estimate)
Includes Water, Waste, Hydro, Gas, In Suite Cleaning
- Ground floor suite with potential for direct access
- New paint, flooring and LED lighting recently completed within suite
- Available June 1, 2024



LOCATION

2171 Thurston Drive is located within the Ottawa Business Park on the north side of Thurston Drive, just east of Conroy Road. The Park is surrounded by a plethora of amenities and has easy access to Highway 417. It is one street south of a major public transportation route.



RICHCRAFT

2171 THURSTON DRIVE
SUITE 105
OFFICE

