

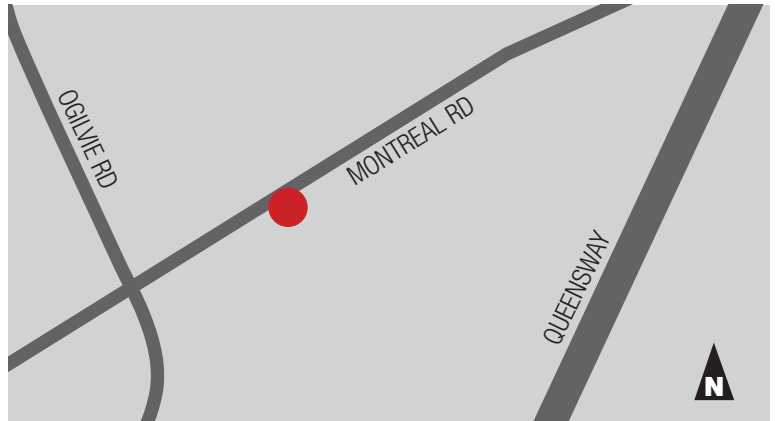


PROPERTY DESCRIPTION

Join us at Sinclair Plaza. With a ceiling height of 16 feet and highly visible signage opportunities, this site is ideal for a variety of retail service and medical uses.

RETAIL Unit 5 - 4,693 SF

- Rental Rate: Inquire within
- Operating Costs: \$18.58 PSF (2023 estimate)
- Formerly a Royal Bank of Canada location and currently a Co-working space
- Excellent visibility to Montreal Road
- Ideal for retail, professional or medical use
- Pylon and Storefront signage available
- Available on 90 days notice



LOCATION

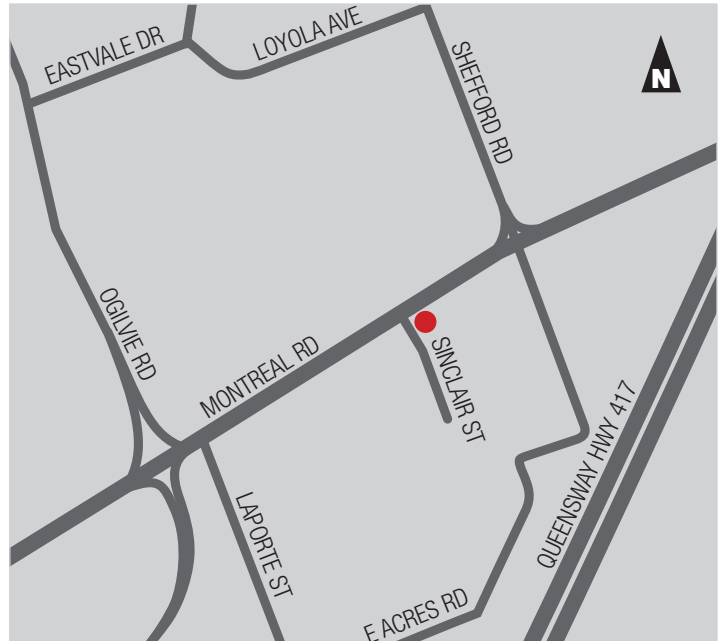
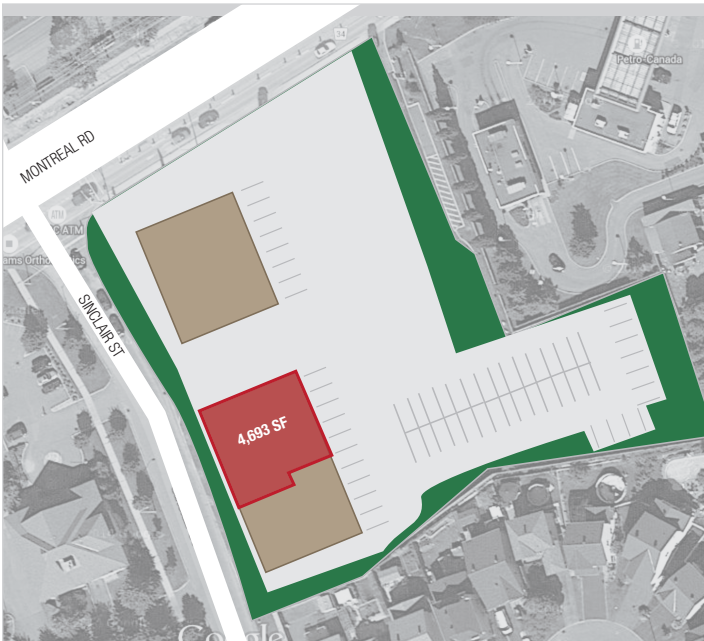
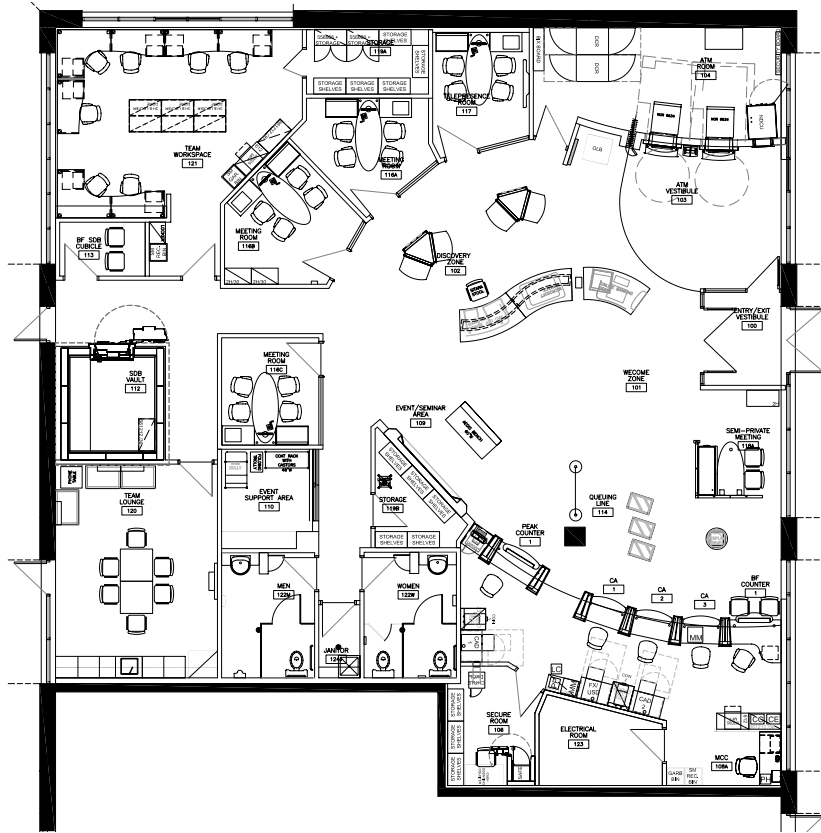
Sinclair Plaza, built in 2010, is located in Ottawa's east end on the south side of Montreal Road between Ogilvie Road and Highway 174. This busy corridor, just blocks from Canotek Industrial Park, is easily accessed through public transportation. The site is surrounded by dense residential and retail uses.

RICHCRAFT

SINCLAIR PLAZA

2160 MONTREAL ROAD UNIT 5

RETAIL



richcraft.com

613.739.5777 | leasing@richcraft.com