



PROPERTY DESCRIPTION

200C Terence Matthews Crescent
Industrial Flex Space Available

200 Terence Matthews Crescent is located on the north side of Terence Matthews Cres., in the Kanata South Business Park. The Kanata South Business Park is situated at the south western edge of Kanata. It's comprised of approximately 180 acres of serviced land primarily zoned light industrial. Primary land uses are light industrial and office.

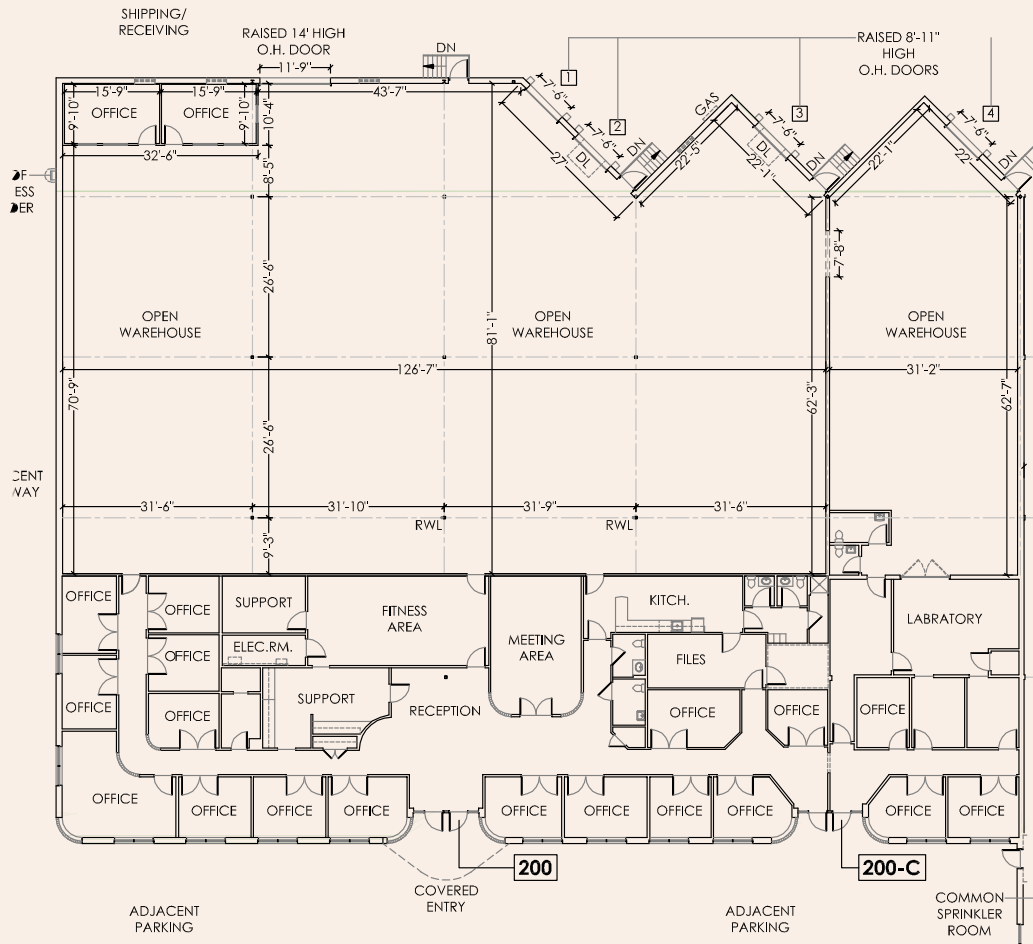


Civic Address	200C Terence Matthews Crescent
Location	Ottawa, Ontario
Rentable Area	19,341 sq.ft.
Occupancy	Available April 1, 2026
Base Rent	\$16.50 per SF
Additional Rent	\$8.70 per SF (est 2025) includes water

PROPERTY FEATURES

- 4 docks doors (with 1 that can accommodate 53' trailer)
- 18' ceiling height
- 3 phase, 400 amp 600 volt power
- Building signage opportunity
- 22 parking spaces
- Available April 1, 2026

200C Terence Matthews Crescent



RICHCRAFT

Ask about this space
Call or email

leasing@richcraft.com
613.739.5777