

1409 Triole Street

Warehouse + Showroom



PROPERTY DESCRIPTION

1409 Triole Street

Warehouse + Showroom

1409 Triole Street features flex warehouse product with a front showroom and the balance as open warehouse space.



Civic Address	1409 Triole Street
Location	Ottawa, Ontario
Total Rentable Area	5,747 sq.ft.
Occupancy	Immediate
Base Rent	\$16.50 PSF
Additional Rent	\$6.67 PSF (est. 2025)

PROPERTY FEATURES

- Front showroom with balance as warehouse
- 1 dock door and 1 ramped door
- 18' clear ceiling height
- Ample parking

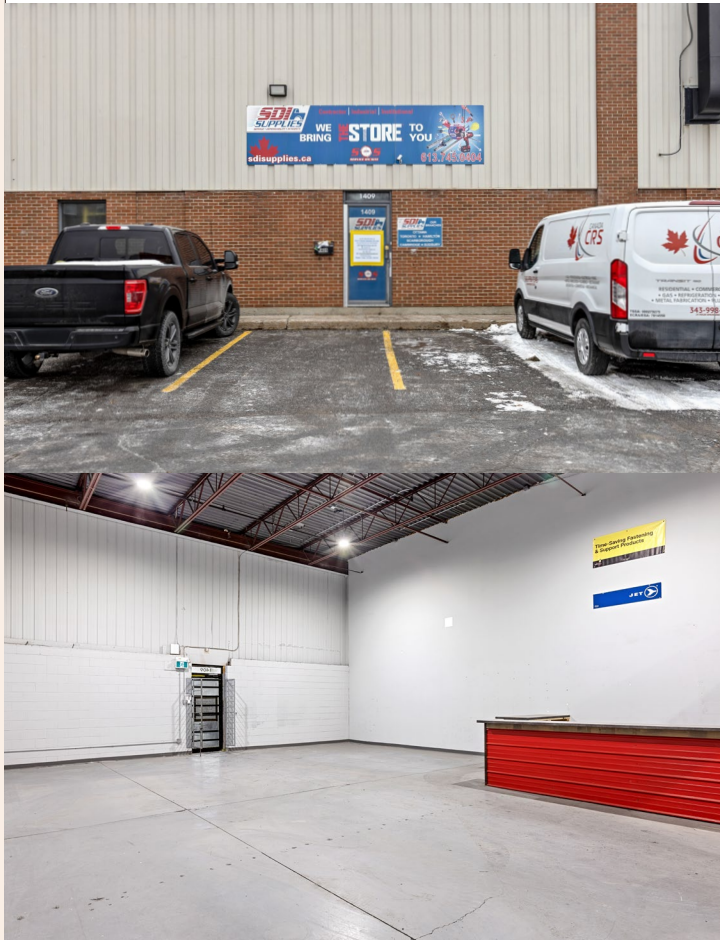
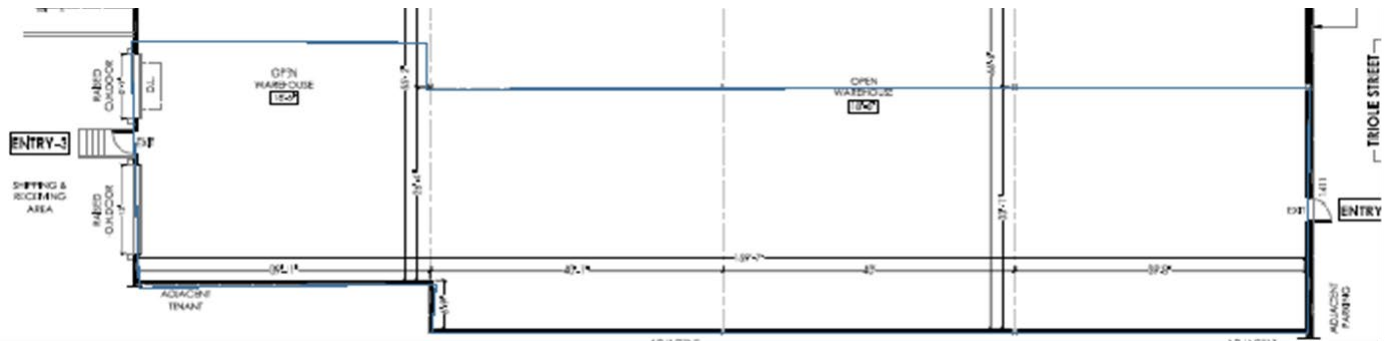
**RICH CRAFT**

Ask about this space  
Call or email

[leasing@richcraft.com](mailto:leasing@richcraft.com)  
613.739.5777

1409 Triole Street

Warehouse + Showroom



#### Demographics

2KM

5KM

2028 Households Proj

10,946

113,679

2033 Households Proj

12,051

124,897

Average Household Size

2.6

2.1

#### Population

2KM

5KM

2023 Population

24,280

212,828

2028 Population Proj

27,014

235,522

2033 Population

29,410

256,225

Median Age

37.4

38.9

#### WEBSITE

[www.richcraftproperties.com/property/1377-1411-triole-street/](http://www.richcraftproperties.com/property/1377-1411-triole-street/)



**RICHCRAFT**

Ask about this space  
Call or email

[leasing@richcraft.com](mailto:leasing@richcraft.com)  
613.739.5777