



PROPERTY DESCRIPTION

19 CentrepoinTE

Retail

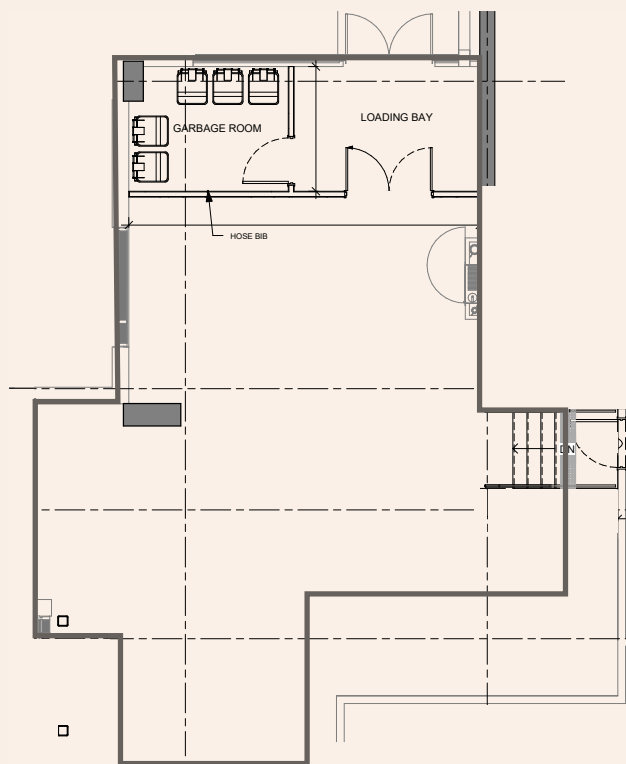
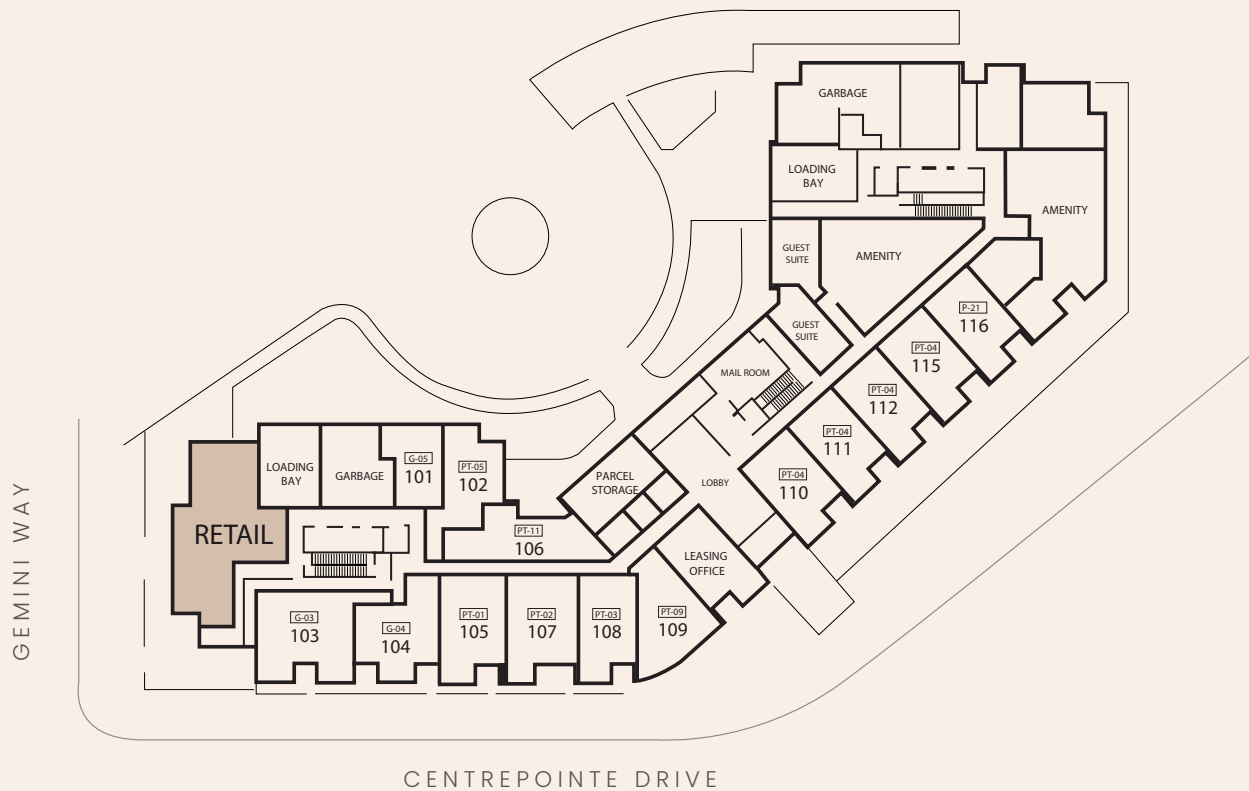
Located in the heart of Ottawa’s west end, this retail space at 19 CentrepoinTE Drive sits at the base of CentrepoinTE Union — two residential high-rise rental towers connected by a central podium. It offers excellent visibility and convenient access to OC Transpo’s Baseline Station, Highway 417, and the upcoming LRT. With Algonquin College, along with a mix of office and retail amenities in close proximity, it’s a prime opportunity in a well-connected, established and growing community



Civic Address	19 CentrepoinTE
Location	Ottawa, Ontario
Rentable Area	1,636 sq.ft.
Occupancy	Available Immediately
Base Rent	\$30.00 PSF
Operating Costs	\$19.00 PSF (est 2025)

PROPERTY FEATURES

- Up to 1,636 sq. ft. of modern ground-floor retail space
- Built-in customer base with 470 residential rental units
- Just 3 minutes from Highway 417 via Woodroffe Ave.
- Steps from Baseline Station, with access to major bus routes and the future LRT
- Walking distance to Algonquin College, College Square, and CentrepoinTE Theatre
- street parking available along Gemini Street
- Surrounded by established residential communities and major institutions



Demographics	2KM	5KM
Households	17,648	100,484
Households Income	\$113,189	\$100,834
Median Age	40.9	39
Population	2KM	5KM
2023 Population	34,742	671,165
2028 Population	38,914	738,772
2033 Population	42,576	799,023
Median Age	40.9	39.8